



Exhibit & Sponsorship Opportunities

Tues., Sept. 29—Fri., Oct. 2, 2026 | Orlando, Florida
Signia by Hilton Orlando Bonnet Creek



Table of Contents

01

Meeting Information & Demographics

03

AANEM Members

04

Exhibit Hall

06

Exhibit Schedule at a Glance

07

Important Dates and Deadlines

08

Sponsorship Levels

10

Presentation Opportunities

12

Digital Marketing

14

Email Ad Placements

15

Meeting Materials

17

Onsite Promotions

19

Meeting Activities

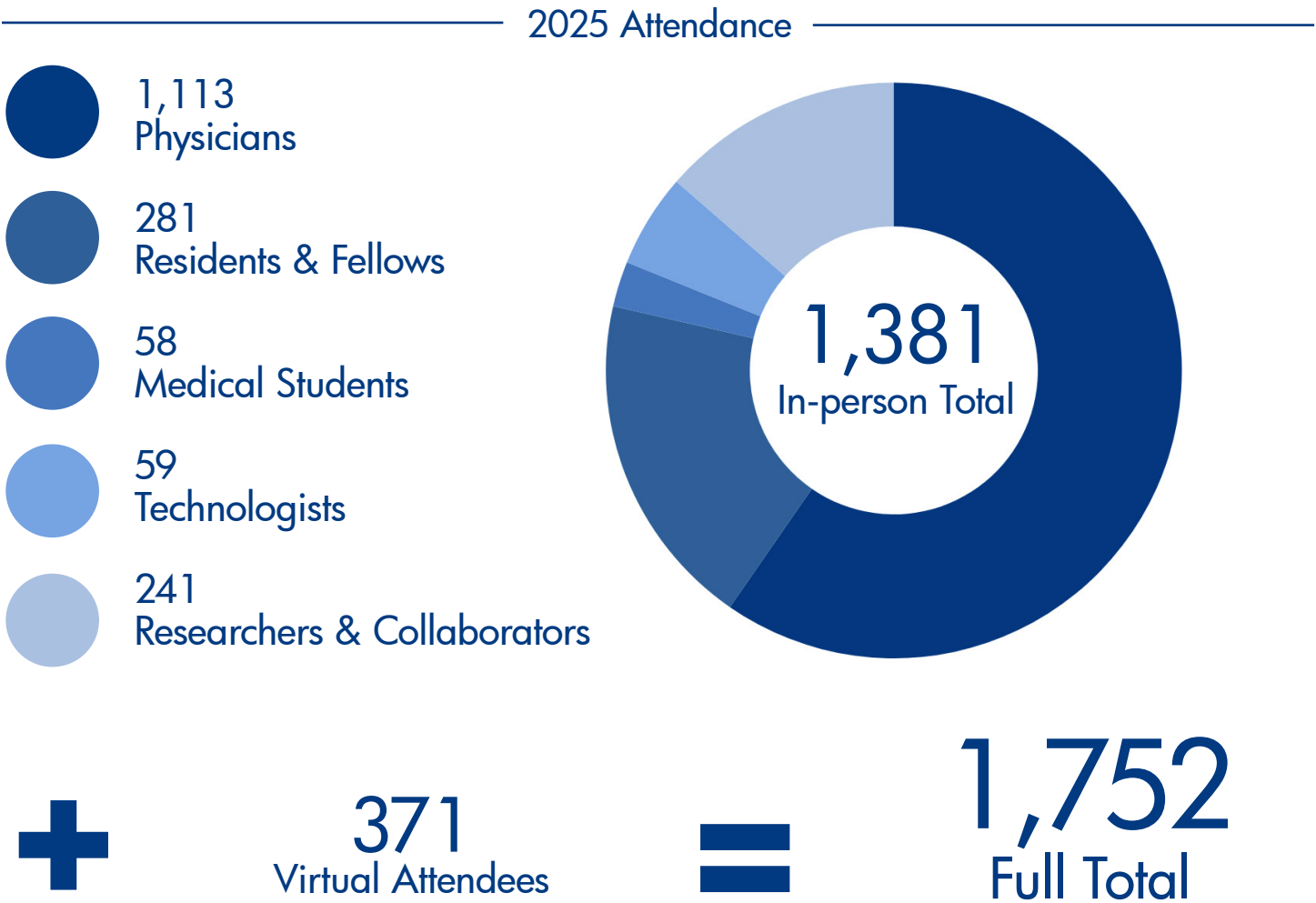
21

Publication Advertising



Meeting Information & Demographics

AANEM’s network of over 8,300+ physician and nonphysician members collaborate to strengthen the fields of neuromuscular and electrodiagnostic medicine. We are a multi-specialty membership, which provides unique educational opportunities you won’t find at primary medical associations. Our ultimate goal is to equip providers with the tools needed to deliver the highest quality care for patients with NM disorders.



Continued on next page

What Do We Offer?

94+ Educational Sessions

47+ Live-Streamed Sessions

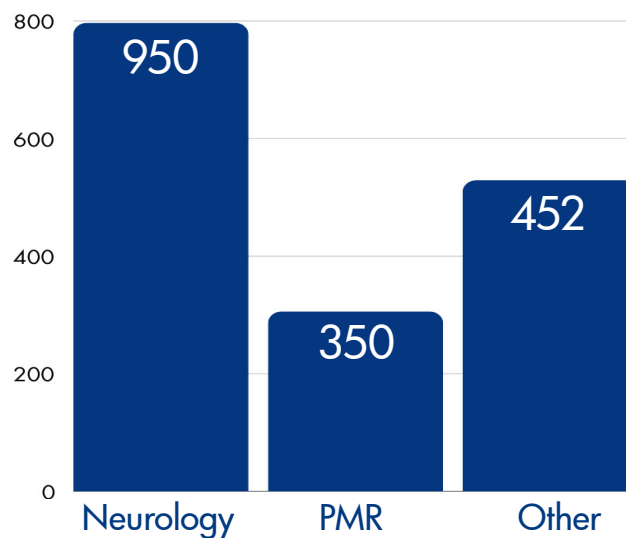
3 Plenary Sessions

63+ Workshops

20 Industry Forums

16 Presentation Stages

What Do They Practice?



Where Are They From?



1,561
North America



191
International



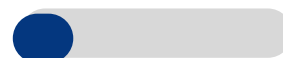
AANEM Members



United States 87%



International 13%



Neurology 64%



PM&R 36%

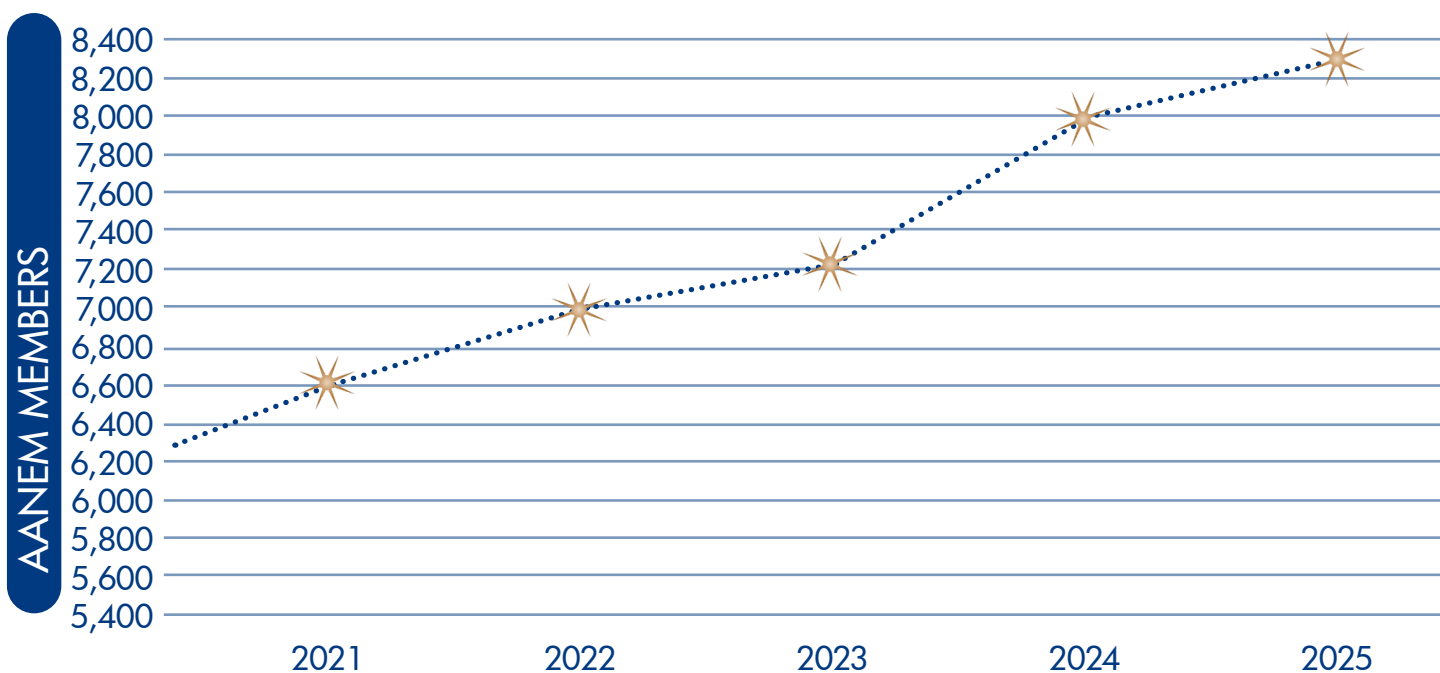
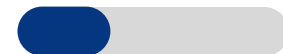




Exhibit Hall

Eligibility to Exhibit

Products and services must be related to the practice of neuromuscular and electrodiagnostic medicine. The AANEM reserves the right to refuse space to any company whose products or services do not meet the educational, scientific, or practice needs of members and attendees.

Booth Size	EARLY BIRD RATE <i>Prior to 5/2</i>	STANDARD RATE <i>After 5/2</i>
10' x 10' Inline	\$3,150	\$3,350
10' x 10' Corner	\$3,500	\$3,700
10' x 20' Inline	\$6,650	\$6,850
10' x 20' Corner	\$7,300	\$7,500
20' x 20' Island	\$15,250	\$15,450

AANEM permits each exhibiting company to purchase a maximum of two booths, with the second booth limited to a 10' x 10' booth.

Exhibit Application Process



Past exhibitors: The company's primary exhibitor contact on record will receive an email with their login information. If your exhibit contact has changed or you did not receive an email, please call 507-288-0100 or email our Corporate Manager at dsidenstricker@aanem.org.

New exhibitors: To set up an account in order to facilitate your online application, please call 507-288-0100 or email our Corporate Manager at dsidenstricker@aanem.org.



Continued on next page

What is Included With the Booth?

Each booth space includes, at no additional charge:

- 4 exhibitor meeting registrations per 10' x 10' booth (additional badges are \$545 each)
- 8' high back drape and 36" high side rails
- 7" x 44" identification sign
- General perimeter security
- Publication of your company's information in the Annual Meeting Program and on the AANEM website
- One pre-registered attendee list (not suitable for mailing)

Responsibility of each exhibitor:

- Labor
- Material handling
- Electrical
- Furniture rental
- Rental displays
- Florist
- Cleaning
- Wi-Fi and/or ethernet connection
- Additional Carpet (ballroom exhibit floor has existing carpet)

Booth Assignments

Assignments will be made in priority point order and will follow the requests of the exhibitor as closely as possible. Priority points are based on:

- Exhibitor history at past meetings
- Level of support for AANEM Annual Meeting in current year
- Date application received
- Size of booth at current meeting

Additional Exhibitor Services and Resources

Access the below services and resources on the [AANEM Exhibitor page](#).

AANEM's Official Service Contractor is the exclusive provider of drayage and material handling services. The contractor's service kit includes complete information, shipping instructions, and order forms for all services offered, and will be available on the AANEM website under Exhibitor Resources. Please note that rigging is not available for this meeting.

All exhibitors will have access to basic Wi-Fi services. Exhibitors requiring enhanced bandwidth—such as for downloading, streaming, or dedicated connections—must purchase additional services through the venue's authorized providers. Information on electrical/utility services and internet upgrades is available on the website under Exhibitor Resources.

A lead retrieval service will be available. Meeting attendees are issued QR coded name badges that will include their name, address, email, and telephone number. Information on how to reserve lead retrieval equipment for your exhibit or Industry Forum is provided on the website under Exhibitor Resources.

All exhibitors are responsible for reading and agreeing to the [Exhibitor Rules and Regulations](#).


Exhibitor/ Industry Partner Badge Access

Badged booth personnel may attend any session including courses, the plenary sessions and poster of the AANEM Annual Meeting however no CME or CEUs are granted for attendance. At the discretion of the AANEM and based on space availability, exhibitors may purchase a ticket to ticketed sessions at the onsite nonmember rate. Exhibitors can attend as spectators only. Attendance at any Industry Forums is limited and allowed only if seating is available after all interested standard attendees have been seated. Exhibit personnel will be allowed access to the Exhibit Hall 1-hour prior and 1-hour following the official exhibit hours. See [Exhibitor Rules and Regulations](#) for additional information.




Exhibit Schedule at a Glance

Exhibit Setup

7 am - 4 pm



Tues., Sept.
29

Exhibit Hall Open
(President's Reception in Exhibit Hall)

5:30 - 7 pm



Tues., Sept.
29

Exhibit Hall Open

9 am - 4 pm*


Wed., Sept.
30


Exhibit Hall Open

9 am - 4 pm*


Thurs., Oct.
1

**Coffee breaks take place in the Exhibit Hall Wednesday and Thursday, 9:30 - 10 am and 3 - 4 pm. Times are subject to change.*

Exhibit Dismantling

4 - 9 pm


Thurs., Oct.
1

Important 2025 Dates and Deadlines

Exhibit booth sales open/early bird pricing

Feb. 25

March

- Exhibitor resources available online
- Enter booth location preferences

Early bird pricing ends

May 1

May 20

Final booth assignments sent

100% booth cancellation fees begin,
including downsizing

June 1

June 25

Company descriptions due for publication
in meeting program

Exhibitors/industry partners
registration opens

June/July

July 1

Final booth payments due

Island booth renderings due

July 15

Aug. 30

Advance warehouse receiving begins

Advance warehouse receiving ends
(to avoid late fees)

Sept. 22



Sponsorship Levels

Sponsorship/Support Level Opportunities & Benefits	Diamond \$150,000 +	Platinum \$110,000 +	Gold \$75,000 +	Silver \$50,000 +	Bronze \$25,000+	Friend \$5,000 to \$24,999
Acknowledgement of support level on signage at the AANEM Annual Meeting	★	★	★	★	★	★
Acknowledgement in the Annual Meeting Program	★	★	★	★	★	★
Acknowledgement in AANEM Edge	★	★	★	★	★	★
Acknowledgement in <i>Muscle & Nerve</i>	★	★	★	★	★	★
Acknowledgement on AANEM website	★	★	★	★	★	★
Complimentary ad space in Annual Meeting Program	full pg/premium placement	full pg	1/2-pg	1/3-pg	1/4-pg	
AANEM membership List for one-time mailing usage	★	★	★	★		
Invitations to attend President's Luncheon at AANEM Annual Meeting	4	3	2	1		
Insertion in annual meeting conference bag	★	★	★	★		
Acknowledgment of support level in Planning Guide	★					
Logo with description on Exhibitor Info page the Annual Meeting Program	★					
Early access to exhibit and sponsorship items (Industry Forums & Presentation Stages not included)	★					

Corporate Support & Sponsorship Recognition

Be recognized for your commitment to AANEM throughout the year for support of educational initiatives, events, advertising, and promotional opportunities. Support and sponsorship levels are determined by total monetary contributions **(paid by July 1)** provided by individual companies in the current year. There are two ways to achieve recognition:

1

Obtain a level cumulatively through “a la carte” selection of the following opportunities:

- Hosting an Industry Forum and presentation stages
- Sponsoring annual meeting opportunities and events
- Advertising in one or all of the following:
 - AANEM Edge ~ AANEM’s print newsletter
 - AANEM Spark ~ AANEM’s electronic news update
 - AANEM website

2

Pay an amount associated with one of the levels listed above and receive the recognition and benefits associated with that level.

NOTE: *Exhibit space, in-kind contributions, affiliate meeting space, membership mailing list rental, paid registration for delegates and/or staff, and American Neuromuscular Foundation contributions are not included in calculating the support levels.*

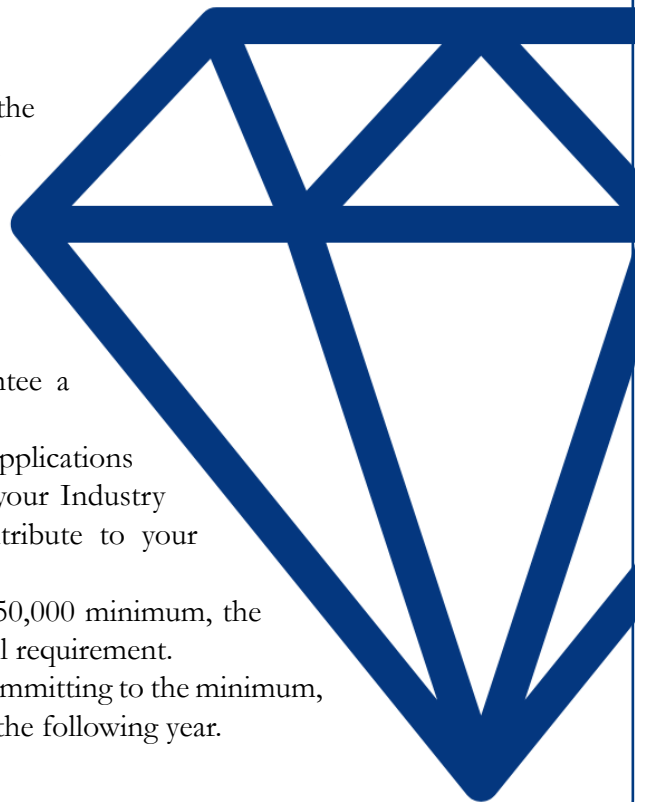


Diamond Level

Partners who commit to the Diamond level will have the advantage of selecting their preferred sponsorships and exhibit items two days before general opening. Diamond level commitment must be confirmed by Feb. 18 by emailing dsidenstricker@aanem.org.

Need to Know Info

- To secure early access, your company must guarantee a minimum investment of \$150,000.
- Please note: Industry Forums and Presentation Stage applications will remain unavailable until general sales open. If your Industry Forum application is approved, the cost will contribute to your Diamond-level commitment.
- If the total sponsorship selections fall below the \$150,000 minimum, the difference will be invoiced to meet the Diamond-level requirement.
- If payment is not received to achieve this level after committing to the minimum, that company will not be eligible for the early access the following year.





Presentation Opportunities

Industry Forums.....\$46,250 - \$87,500

Industry Forums offer an opportunity to provide education on a topic related to a disease state, research findings, product, service, or build your corporate brand. All sessions are open to registered meeting attendees free of charge. **Food and beverage is provided by AANEM for all Industry Forum attendees during a 60-minute presentation.**



RULES & REGULATIONS

Breakfast Forum.....\$46,250

8 available - Sept. 29, 30, Oct. 1, 2 | 100 seating Limit | *Breakfasts run concurrently each day*

Lunch Forum.....\$55,000

3 available - Sept. 29, 30, Oct. 1 | 150 seating limit | *Lunches run concurrently each day*

Lunch Forum.....\$72,000

3 available - Sept. 29, 30, Oct. 1 | 200 seating limit | *Lunches run concurrently each day*

Lunch Forum.....\$87,500

3 available - Sept. 29, 30, Oct. 1 | 250 seating limit | *Lunches run concurrently each day*

Virtual Industry Forum.....\$72,000

3 available - Sept. 29, 30, Oct. 1

If you are interested in a Virtual Industry Forum option, please contact our Corporate Manager at dsidenstricker@aanem.org.

Hosts receive the following:

- Complimentary session meeting space (room designated by the AANEM)
- Complimentary standard AV (one projection screen, one laptop computer for presentation, one LCD projector, one lavalier microphone, one table microphone, one wireless slide advancer with laser pointer)
- Complimentary listing on the AANEM website with a link to the sponsor's website
- Complimentary preregistered attendee list for your company's targeted mailing
- Inclusion of session information on signage at annual meeting
- Waiver of AANEM door drop access fee (hotel fees still apply)
- Session details included in the Annual Meeting Program and mobile meeting app
- Administrative fee applied toward support recognition level
- Additional benefits as provided by support recognition level

Continued on next page



Presentation Stage.....\$8,750 - \$17,500

Sponsor an informational educational demonstration or small group presentation conducted within the Exhibit Hall. *Times subject to change*

- The spaces will have a presentation stage, basic audio visual and theatre seating limited to 30.
- Available only during Exhibit Hall dates and hours.
- Two stages running concurrently.
- The stage schedule will be posted within the Exhibit Hall, the Annual Meeting Program and in the meeting mobile app. Time slots are first come first serve.
- All Friend level support benefits listed on page 8

Presentation Stage Breaks.....\$8,750

- Wednesday and Thursday
- 20 minutes | 9:40-10 am, 2:40-3pm, 3:10-3:30pm

Presentation Stage Lunch.....\$17,500

- Wednesday and Thursday
- 45 minutes | 11:40 am-12:25 pm
- Food and beverage is provided by AANEM for the presentation stage lunches.



Digital Marketing



Wi-Fi Access.....\$33,000

- Sponsor the wireless internet access in the meeting space and help attendees stay connected while away at the AANEM Annual Meeting.
- Full screen image of company artwork on the Wi-Fi entry page
 - Customized access code for Wi-Fi usage in the meeting space
 - Recognition of sponsorship level on the AANEM website, in the Annual Meeting Program, in the Meeting Mobile App, and on promotional meter board and easel signage
 - All Bronze level support benefits listed on page 8



BACK! Digital Readerboard Branding.....\$30,000

- Enhance your brand’s presence with exclusive Digital Readerboard Branding. Displayed prominently across 8 digital screens, your ads will seamlessly guide and engage attendees throughout the meeting space along with the AANEM schedule of events.
- Corporate artwork or logo displayed on a total of 8 digital screens
 - All Bronze level support benefits listed on page 8



NEW! Landscape Escalator Monitor Sponsorship\$20,000

- Located just off the main foyer, this prominent 86” landscape monitor (1920w x 1080h) sits at the top of the escalator leading to all workshops, Ask the Experts sessions, and roundtables. Sponsors receive a full-screen takeover rotating with the an AANEM promotional ad (5 seconds), ensuring exceptional visibility for all attendees moving between major program areas.
- Corporate artwork or logo displayed on the 86” monitor
 - All Friend level support benefits listed on page 8



NEW! LED Wall (North Foyer) Sponsorship (3 available).....\$20,000

- Make a bold first impression with this high-impact LED wall located in the North Foyer—the very first visual attendees see upon arriving at the meeting. Your ad will be displayed in 5-second increments on a large 4096w x 1592h screen, rotating with an AANEM promotional ad (also 5 seconds). This prominent placement ensures exceptional visibility as attendees enter and navigate the event.
- Corporate artwork or logo displayed on the LED Wall
 - All Friend level support benefits listed on page 8



For specific location details view the [SPECIFICATIONS GUIDE](#)

Continued on next page



Mobile Meeting App (3 available).....\$20,000

Sponsor the mobile meeting app that includes searchable meeting agenda, sessions, venue maps, attendee and speaker lists, scientific abstracts, exhibitor listings and more.

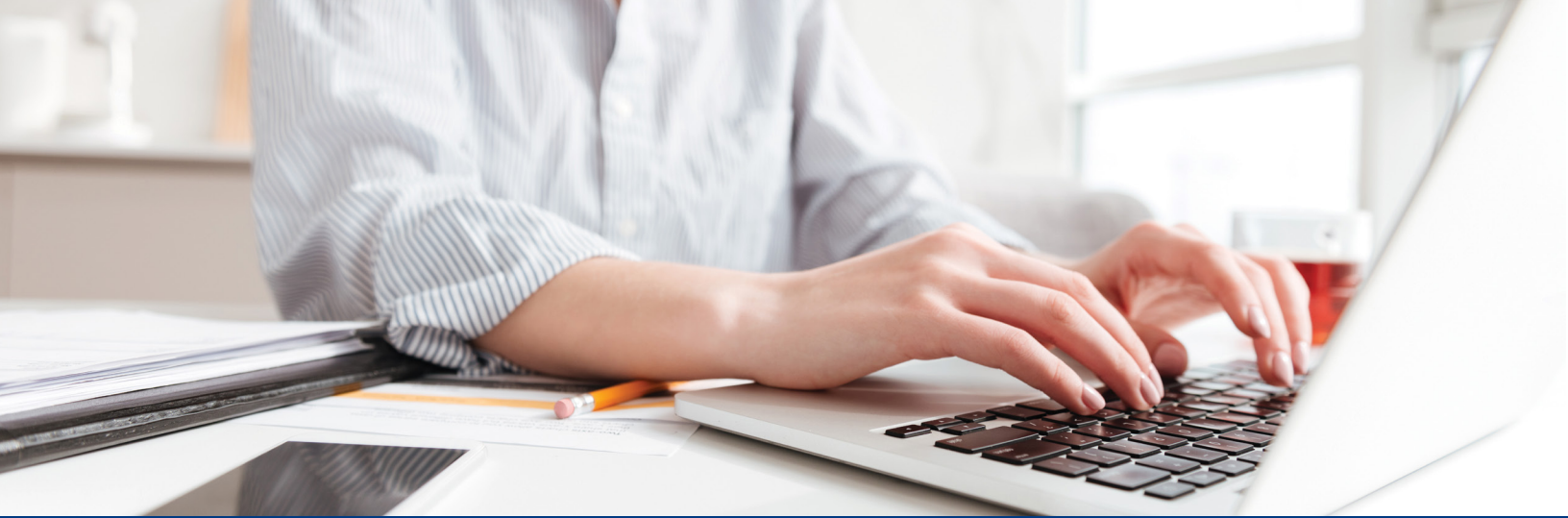
- Free rotating banner ad appearing at the bottom of every screen with a re-direct URL link to sponsors designated page
- Recognition of sponsorship level on the AANEM website, in the Annual Meeting Program, and on a promotional onsite meter board
- All Friend level support benefits listed on page 8



BACK! AI Cartoon Portrait.....\$7,500

Bring a touch of fun and creativity to the event with the AI Cartoon Portrait! Located in the Exhibit Hall, attendees can snap a photo and watch it transform into a charming, personalized AI-generated cartoon, creating a unique keepsake they'll love to share.

- Corporate logo/artwork on signage at AI cartoon station
- All Friend level support benefits listed on page 8



Email Ad Placements:



Daily Meeting Email Ad Placement	
Middle Placement.....	\$3,750 per email
Bottom Placement.....	\$2,150 per email

Get your brand in front of every in-person attendee with AANEM’s nightly *What’s Up for Tomorrow* email. Sent each evening during the Annual Meeting, these updates share important details for the next day’s sessions and events—offering prime visibility for your message as attendees plan ahead. Ad size (325 pixels x 255 pixels) and URL link due by Sept. 14.

- Monday, Sep. 28 – *day before the meeting*
- Tuesday, Sep. 29 – *1st day of meeting*
- Wednesday, Sep. 30 – *2nd day of meeting*
- Thursday, Oct. 1 – *3rd day of meeting*
- Friday, Oct. 2 – *4th day of meeting*



Know Before You Go Email Ad – In Person Attendees.....	\$7,000
--------------------------------------------------------	---------

Reach highly engaged in-person attendees right before they arrive on-site. Your custom banner ad will appear at the bottom of the “Know Before You Go” email—one of the most-opened communications of the meeting—sent approximately one week prior to the event. This prime placement puts your message in front of attendees as they finalize travel plans, review key details, and prepare for the meeting.

- Bottom ad placement - Ad size (325 pixels x 255 pixels) and URL link due by Sept. 4
- All Friend level support benefits listed on page 8



Know Before You Go Email Ad – Virtual Attendees.....	\$4,500
------------------------------------------------------	---------

Connect with virtual participants at a key moment before the meeting begins. Your custom banner ad will appear at the bottom of the “Know Before You Go” email sent to all virtual attendees roughly one week prior to the event. This high-visibility placement delivers your message as attendees set up their technology, review the schedule, and get ready to join the meeting online.

- Bottom ad placement - Ad size (325 pixels x 255 pixels) and URL link due by Sept. 4



Meeting Materials



Hotel Key Cards.....\$28,750

The key to success! Provide meeting attendees with a customized room key that includes your full-color corporate logo/artwork on the front of the key. Artwork will be coordinated between the sponsor and the AANEM. Key and printing costs are included with the sponsorship fee.

- Corporate logo/artwork on each key card
- All Bronze level support benefits listed on page 8



Reusable Water Bottle.....\$20,000

Attendee will receive a water bottle with your company name/logo. Water bottles will be available during the meeting. Watering stations will be conveniently located in the Exhibit Hall where attendees can fill their water bottles during refreshment breaks. 1,000 water bottles to be provided.

- Corporate logo/artwork on each water bottle
- All Friend level support benefits listed on page 8



Meeting Bag.....\$20,000

Available to every attendee, the conference bags offer the greatest visibility for your company at the meeting.

- Your company logo displayed alongside the AANEM logo, or an insert inside the bag if company policy does not allow for logo placement
- All Friend level support benefits listed on page 8



Name Badge Lanyards.....\$20,000

Name badge lanyards are available to all meeting attendees, giving your company exposure throughout the meeting.

- Corporate logo, name and/or website printed on each lanyard
- All Friend level support benefits listed on page 8

Continued on next page



NEW! Hotel Door Hanger Sponsorship.....\$15,000

Put your brand directly in attendees' hands with a custom-designed "Do Not Disturb" door hanger placed in every guest room. This high-visibility item offers repeated exposure throughout their stay, ensuring your message is seen daily in a personal and practical way.

- Custom artwork on door hangers - Must include
- (Please Do Not Disturb) on the sign
- All Friend level support benefits on page 8



Coffee Cups.....\$8,000

Have your corporate name "in hand" when attendees explore exhibits and the coffee breaks!

- Corporate logo/artwork on disposable coffee cups in Exhibit Hall
- All Friend level support benefits listed on page 8



Meeting Bag Insert.....\$4,950

Your materials will be placed in the attendee's conference bag, offering direct exposure to engaged participants throughout the meeting.

- Bag insert available to all meeting attendees



Conference Pens.....\$3,300

Be at the fingertips of all attendees when we distribute your pens to all meeting attendees. You supply the pen and we will include it in each attendee's conference bag.

- Pen available to all meeting attendees



Preregistered Attendee List.....\$850

Attendee list to be pulled three weeks prior to the meeting and is not suitable for mailing.



Onsite Promotions



NEW! Premier Charging Lounge | Center Foyer.....\$60,000

Located in a high-traffic area near registration and between the Exhibit Hall and Poster Hall/ Industry Forum, this expanded charging lounge offers attendees a comfortable place to recharge and take a break. As the exclusive sponsor, your brand will be prominently featured throughout this contemporary, high-visibility space that draws steady traffic all day.

- 2 Custom charging tables with barstools
- 2 Custom double-sided meter boards
- Includes: 2 love seats, 2 club chairs, 2 end tables, 2 cocktail tables, 2 bistro tables (42"x36") with 4 barstools (Subject to change; comparable furnishings will be maintained)
- *Sponsor has the option to use the listed furniture or supply own pending AANEM approval*
- All Silver level support benefits listed on page 8



NEW! Bridge Branding.....\$20,000

Highlight your company on the main pathway every attendee must use. This sponsorship features prominent branding along the bridge connecting AANEM sessions and registration to the Exhibit Hall—the sole route into the plenary and sessions. With continuous foot traffic throughout the meeting, your message receives guaranteed visibility and repeated exposure.

- Custom column clings, includes 2 columns and a 4'x4' floor graphic
- All Friend level support benefits listed on page 8



Escalator Glass Branding | Bonnet Creek North Foyer.....\$20,000

Located at the main entrance to the meeting space and near the exhibit hall, this high-visibility opportunity puts your message in one of the busiest areas of the event. Your brand will be featured on eye-catching graphics displayed on the escalator glass. The escalators also lead down to the lower level, where hands-on workshops are held, ensuring your brand is seen by attendees moving between key program areas all day long.

- Custom glass clings on three glass panels, double-sided branding
- All Friend level support benefits listed on page 8



For specific location details view the [SPECIFICATIONS GUIDE](#)

Continued on next page



Wrapped Columns.....\$18,000

Enhance your visibility in a high-traffic corridor with branded column wraps near the Industry Forum spaces. Located in the hallway that connects to the Waldorf Astoria, where additional guests will be staying, this placement ensures repeated exposure in a prominent and elegant setting as attendees move between key areas.

- Custom column wraps on three columns
- All Friend level support benefits listed on page 8



Escalator Glass Branding | Center Foyer.....\$10,000

Position your brand along one of the most frequented pathways of the meeting. This sponsorship features branded graphics on the escalator glass connecting the educational sessions and Poster Hall, with the escalators continuing down to the lower level where hands-on workshops are held. With steady attendee flow between these key program areas, your message receives continuous, high-impact visibility.

- Custom glass clings on one glass panel, double-sided branding
- All Friend level support benefits listed on page 8



Guest Elevators | Interior Branding for 5 elevators.....\$35,000

Showcase your brand with high-impact visibility in one of the property's busiest touchpoints in the elevators. This sponsorship features a full interior back wall glass panel for five guest elevators, ensuring attendees engage with your message throughout every ride—from the lobby to their guest floor.

- Custom artwork on the interior glass panel back wall in each elevator for bank G & 3-10
- All Bronze level support benefits listed on page 8



Guest Elevators | Interior Branding for 4 elevators.....\$28,000

Elevate your presence with prominent branding inside four guest elevators. Your message will be displayed on the full interior back wall glass panel, assuring every attendee sees your company throughout their journey to and from their rooms.

- Custom artwork on the interior glass panel back wall in each elevator for bank G & 11-18
- All Bronze level support benefits listed on page 8



Meter Boards.....\$4,000

Promote your product, service, or exhibit presence on a single-sided meter board that is located in a high traffic area.

- One full-color, 1-sided meter board placed in high traffic area



For specific location details view the [SPECIFICATIONS GUIDE](#)



Meeting Activities



Resident, Fellow & Medical Student Luncheon.....\$27,500

This luncheon on Thursday brings together all resident, fellow, and medical student attendees, with several AANEM board members and directors also invited to network and socialize. It offers a valuable opportunity to connect directly with emerging clinicians as they build relationships, engage with leadership, and chart their professional paths.

- Corporate recognition in program materials/signage
- Corporate recognition on easel sign outside the luncheon room
- Invitation for 4 representatives to attend the luncheon
- All Bronze level support benefits listed on page 8



Resident, Fellow & Medical Student Breakfast.....\$20,000

Connect with the next generation of physicians by sponsoring this dedicated breakfast on Wednesday for residents, fellows, and medical students. This morning event gives trainees a chance to network, fuel up for the day, and engage with peers and leaders across the field, providing you with direct visibility and meaningful exposure to emerging clinicians at a key point in their career development.

- Corporate recognition in program materials/signage
- Corporate recognition on easel sign outside the luncheon room
- Invitation for 4 representatives to attend the breakfast
- All Friend level support benefits listed on page 8



Medical Student Meet & Greet.....\$5,000

Connect with the future of neuromuscular medicine by sponsoring this opportunity for medical students. This event brings students together with young professionals and association leaders as they explore opportunities at the AANEM Annual Meeting.

- Corporate recognition in program materials/signage
- Corporate recognition on easel sign outside the room
- Invitation for 4 representatives to attend the breakfast
- All Friend level support benefits listed on page 8

Continued on next page



President's Welcome Reception.....\$33,000

The President's Welcome Reception is the premier social event of the AANEM Annual Meeting. This well-attended event will take place on Tuesday evening in the Exhibit Hall and features food and beverages provided by the AANEM.

- Corporate recognition in program materials/signage
- Corporate recognition on easel sign outside the room
- Cocktail napkins with your logo
- All Bronze level support benefits listed on page 8



Abstract Awards Reception.....\$30,000

Meeting attendees are invited to a lively reception on Wednesday from 5:30–7pm, offering the perfect opportunity to network with colleagues and explore award-winning poster presentations, while enjoying complimentary food and beverages.

- Corporate recognition in program materials/signage
- Corporate recognition on easel sign outside the room
- Cocktail napkins with your logo
- All Bronze level support benefits listed on page 8



EMG Talk.....\$16,500

The highly anticipated EMG Talk featuring Spike and Wave, and enjoy a well-attended evening that's both entertaining and educational. Complimentary alcoholic and nonalcoholic beverages will be provided by the AANEM.

- Corporate recognition in program materials/signage
- Corporate recognition on easel sign outside the room
- Cocktail napkins with your logo
- All Friend level support benefits listed on page 8



Educational Session Support.....\$1,000 - \$25,000

There are many opportunities for your organization to provide support at the AANEM Annual Meeting through various educational sessions, workshops, and ask the experts sessions.

All AANEM educational session supporters receive the following recognition:

- Recognition signage at the meeting
- Acknowledgement in the Annual Meeting Program
- Acknowledgement on the AANEM website

Determine which session(s) is best for your organization based on whether you desire maximum or focused exposure.

Please email dsidenstricker@aanem.org to request a complete listing of available sessions/topics.



Publication Advertising



Annual Meeting Planning Guide

A print publication highlighting AANEM Annual Meeting sessions, workshops, and registration details that informs neuromuscular specialists and allied health professionals about the meeting and assists with registration.

Audience: Mailed to AANEM members, past attendees, and available online as a PDF.

Frequency: Published annually before registration opens.



Annual Meeting Program

A print publication for AANEM Annual Meeting attendees that provides the meeting schedule and essential information.

Audience: Distributed to attendees and available online as a PDF for non-attendees.

Frequency: Published annually.



AANEM Edge

AANEM's print magazine for members that shares updates, research, and resources to support neuromuscular specialists in providing exceptional care.

Audience: Mailed to AANEM members (over 7,800 professionals). Available online as a PDF for non-members.

Frequency: Published twice a year (Winter Issue – Feb.1 & Summer Issue – Aug. 1).



AANEM Spark

AANEM's biweekly digital newsletter that delivers updates, research, and resources to support neuromuscular specialists and promote AANEM initiatives.

Audience: Emailed to AANEM members (over 7,800 professionals).

Frequency: Distributed every other Wednesday throughout the year.

Performance:

99.5% successful delivery rate

51% total open rate

3.4% click-through rate

Continued on next page



AANEM Website

A public website for AANEM that provides resources, updates, and member-specific information to support neuromuscular specialists and raise awareness about neuromuscular diseases. This includes neuromuscular professionals, AANEM members, non-members, patients, and the general public.

Frequency: Content updated regularly.

Performance:

172,855 average monthly pageviews

4,870 average monthly home page pageviews

11,837 average monthly pageviews from June-October for “Meeting Pages “



For more information on each opportunity, view: [ADVERTISING KIT](#)



Mailing List Rental.....Price Varies

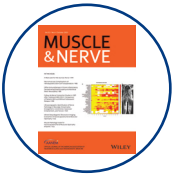
Mail your message directly to members of the AANEM or AANEM Annual Meeting attendees.

Mailing list rental options and rates are available from InFocus Marketing at

www.infocusmarketing.com/lists/aanem.



[AANEM MEMBER/ATTENDEE LIST](#)



Muscle & Nerve Journal Advertising.....Price Varies

Muscle & Nerve is the official medical journal of the AANEM and is an international and interdisciplinary publication of original contributions in both health and disease. This 100% paid subscription readership of over 7,800 members and 1,000 institutions provides a qualified audience for your advertising message.



[MUSCLE & NERVE RATE CARD](#)



Questions?

Danielle Sidenstricker

Corporate Relations Manager
dsidenstricker@aanem.org | 507-288-0100



2621 Superior Drive NW
Rochester, MN 55901

P 507-288-0100 | F 507-288-1225
aanem@aanem.org

